

THE NC GAMBIT

January 2005

Tapper and Rangarajan share NC Open title.

Both players score 4.0/5. Tapper is declared state champion based on tie-break

INSIDE:

Karthik Rangarajan, North Carolina's highest rated player, annotates a game from the NC Open.

A Second Chance

by NM Mike Klein

Tournament Info

Land of the Sky

January 28-30, 2005

NC Scholastic Championship

March 5-6, 2005

President: Neal Harris

> rajkipling@yahoo.com

1st VP: Randy Wheelless

>rwheelless@carolina.rr.com

2nd VP/Scholastics: Ken Baxter

>ken_baxter@adelphia.net

Secretary/Treasurer: Gerben Hoekstra

>gerbenh@earthlink.net

Editors: Ian Sanders and Neal Harris

>iansanders@gmail.com

DUES:

Annual dues are \$5 adult. Scholastic membership is free.

Membership is open to all; however, only North Carolina residents may vote, hold office, or compete in the Invitational. Each member is entitled to play in NCCA events and win official USCF sanctioned state titles. The Gambit will be an online publication. Dues should be mailed to Gerben Hoekstra. 5404 Crosshill Court, Charlotte, NC 28277.

USCF DELEGATES:

Robert Singletary >NCTRobert@aol.com>

Kevin Hyde > hyde@a-o.com <

ALTERNATIVE DELEGATES:

Neal Harris <rajkipling@yahoo.com>

Pat Hoekstra <polestar@ix.netcom.com>

Jill Bambara > americanchesslady@yahoo.com>

Leland Fuerstman > lelandfue@yahoo.com>

John Thomas > jthomas@caa.k12.nc.us>

Wilder Wadford > wilderwad@aol.com<

F. Eugene Davenport > eugenedavenport@aol.com<

Charles Palmer >palmer@brinet.com>

NC CHAMPIONS

NC Open- Larry Tapper and Karthik Rangarajan

NC Denker Representative: Daniel Tapia

NC Invitational: NM Frankie Newton

NC Hall of Fame: Leland Fuerstman, Greg Samsa, Robert Singletary, Al Lipkin, Wilder Wadford, Bernie Schmidt

Ed: Please email suggestions and comments and contributions. Feedback is welcome!

A Message From NCCA President Neal Harris

Several important items need our members' attention.

New officers were elected at the 2004 NC Open. Randy Wheelless is now Vice President of the NCCA and Ken Baxter is Scholastic Vice President. Gerben Hoekstra remains Secretary/Treasurer.

Members present at the annual business meeting voted to keep the NC Championship an open tournament.

The top female scholastic player will be allocated equal funding as the overall scholastic champion to represent North Carolina in the Polgar Invitational.

Bernie Schmidt was inducted into the NCCA Hall of Fame at the NC Open.

The Gambit will be an online publication.

Any contributions to the Gambit are welcomed. Please send any articles, games, or reports to:

iansanders@gmail.com

2004 NC State Championship

by Ian Sanders

For the first time in nine years, Charlotte was the home of the North Carolina State Championship. This year's tournament returned to the open format of past years which allowed a large number of players from surrounding states to attend. A total of 180 players participated. Once again, the tournament organizer was Thad Rogers of Georgia.

In the top section, first place was split by a newcomer and a veteran. National Master Larry Tapper blitzed through his first three opponents and then drew co-champion Karthik Rangarajan and International Master Jonathan Schroer. Karthik Rangarajan

(2477), who recently moved to NC and has since claimed the highest rating in the state, took a share of first place in his first appearance in the State Championship. Rangarajan drew games against Georgian Tim Brookshear and Tapper. Through tiebreaks, Larry Tapper was declared the winner and 2004 North Carolina State Champion. 3rd-5th places were shared by IM Jon Schroer, NM Matt Noble and Shawn McIntosh who all finished with 3.5 points.

The U2000 section was won outright by Cezarte Ramos (1970), who won his four straight games before drawing in the final round to clinch the title. Frank Mu, who's only loss came at the hands of Ramos, finished in clear second with 4.0 points. Patrick McCartney, Ken Baxter and Ian Sanders shared 3rd-5th with 3.5 points.

In the U1800, first place was split four ways between Michael Savage, Sohrab Saharkhiz, Paul Calloway, and Justin Laylor (4/5). The U1600 Section was taken by Laurin Keller with 4.5 points.

Summary of Winners

Open:

1st: Larry Tapper, Karthik Rangarajan (4.0)

3rd-5th: Jon Schroer, Matt Noble, Shawn McIntosh (3.5)

U2000:

1st: Cezarte Ramos (4.5)

2nd: Frank Mu (4.0)

3rd-5th: Ken Baxter, Patrick McCartney, Ian Sanders (3.5)

U1800:

1st: Michael Savage, Paul Calloway, Justin Laylor, Sohrab Saharkhiz (4.0)

U1600:

1st: Laurin Keller (4.5)

2nd:William Taylor (4.0)

U1400:

1st:Nick Long (4.5)

2nd:Jordan Taylor, Phil Whittington (4.0)

U1200:

1st:John Sypniewski (4.5)

2nd:Ervon Nichols (3.5)

U1000:

1st:Tanner Shields (5.0)

2nd:Gary Lindsey (4.0)

The complete crosstable is available in the Tournaments section of www.ncchess.org

NCCA Business Meeting

The annual business meeting was held during the state championship. Several issues were decided.

Bernie Schmidt was inducted into the NCCA Hall of Fame.

The 2005 NC State Championship will be Open.

The Gambit will be a purely online publication.

Randy Wheelless is NCCA Vice President.

Ken Baxter is Scholastic Vice President.

GAME OF THE MONTH

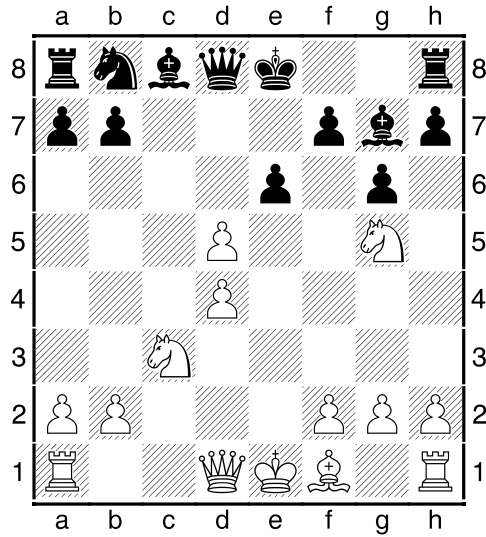
Karthik, Rangarajan (2520) – Larry, Tapper (2280) [B14]

NC State Open 2004 (4), 10.2004

[Rangarajan, Karthik]

1.e4 d5 2.exd5 Nf6 3.c4 c6 4.d4 cxd5 5.Nc3 g6

6.Nf3 Bg7 7.Bg5 Ne4 8.cxd5 Nxd5 9.Nxd5 e6



?! (9. ..0-0)

10.Qd2 ?

This position is similar to a position that arises from a popular variation in the Grunfeld opening, which I play time and again with black. 1.d4 Nf6 2. c4 g6 3. Nc3 d5 4. Nf3 Bg7 5. Bg5 Ne4 6. cd5 Ng5 7. Ng5 e6 8. Qd2 ed5 The difference in this position is that the e and c pawns are missing here. White's f1 bishop is much more mobile and black has an additional weakness on d5 (which is supported by c7-c6 in the Grunfeld variation). Black has its trumps too. White has its d4 weak and the position is much more open without e and c pawns and hence favors the bishops. Influenced by prior knowledge of the Grunfeld variation, I missed out a simple variation for white to seize the initiative. [10.Bb5+ ! 10...Kf8 11.Nf3 exd5 12.0-0 +/- XKf8]

10...exd5 11.Qe3+ Kf8 12.Qf4 Bf6 13.h4 Nc6 14.0-0-0 Kg7 15.g4 h6 16.Nf3 Be6 !

Black threatens Qb8 forcing swap of queens to a favorable end game. I had clearly overlooked this plan when I had gone for 10. Qd2

17.Bb5 Qb8 18.Qxb8 Raxb8 19.Rhg1 Rbc8

Black is clearly better in this end game. White has weak pawns on d4, g4 and h4. The white knights don't have good squares and the rooks are tied down to the defense of d4 and g4. [19...h5 ! 20.g5 Be7 21.Bxc6 bxc6 22.Ne5 Rhc8 =/+]

20.h5 ! 20...g5 21.Bxc6 Rxc6 22.Kd2 Rhc8 23.Kd3 Rc4

24.Rde1 Bd8 25.Ne5 Rb4 26.b3 Bb6 27.Nf3 Ba5 28.Rc1 Rb6 !

[28...f5 29.Ne5 ! 29...fxg4 30.Na4 Bf5+ 31.Ke3 White has adequate counterplay on the c-file whereas the black rook will take time to come back to play.]

29.Na4 Rbc6 30.Rxc6 Rxc6 31.Ne5 Rc7 32.Nc5 Bc8 33.a3 !

The start of a veiled plan to gain counterplan and exchange one of the bishops

33...b6 34.b4 bxc5

35.dxc5

The point of white's plan starting 31. Ne5 and 33. a3! White threatens to support c5 by Kd4 and then gobble up the bishop.

35...f6 ?

Though this seems natural, Black throws away practically any winning chances here. [35...Kf6 !? 36.Kd4 Re7 37.Nc6 Re4+ 38.Kxd5 Bb7 39.Kxe4 Bxc6+ 40.Kd4 Bc7 41.a4 ! 41...Bxa4 42.Kd5 White has very strong counterplay despite its material disadvantage owing to its passed c-pawn and the favorable position of the king.; 35...Re7 ?! 36.Nc6 Ba6+ 37.Kd4 Re4+ 38.Kxd5 Bb7 39.Kxe4 Bxc6+ 40.Kd4 Bc7 41.a4 ! 41...Bxa4 42.Ra1 White has every chance to win owing to his passed pawns and backward position of the black king. This is worse than 35... Kf6 since with King of f6 white cannot play 42. Ra1 due to Be5+; 35...d4 ! The most accurate and in my opinion the only way to win for Black 36.bxa5 Forced (36.Kxd4 ? 36...f6 37.Ng6 Rd7+ and Ba5 moves to c7 or d8 and black retains its extra piece) 36...Rxc5 37.Kxd4 Rxa5 Compared to the game, black's king side pawns are much more secure. Black can hold on to its pawns with Be6 . White's a3 and g4 pawn on the other hand are highly vulnerable and black must win.]

36.Ng6 d4

Too late. With the black pawn on f6 and Knight on g6 white exploits black's exposed king

37.bxa5 Rxc5 38.Kxd4 Rxa5 39.Re1

Black cannot avoid continuous checks by the invading white rook on the seventh or eighth ranks. On 39. ... f5 40. Re8! Ba6 41. Re7+ and Ra7 and black is in a lot of trouble because of the pin

39...Ra4+ 40.Kc5 Bxg4 41.Re7+ Kg8 42.Re8+ ½-½

"A Second Chance"

By Mike Klein

Save opening theory, the study of one's previous games is usually meant to glean a new pattern that can be applied to a future game. Chess players learn to put the rook behind a passed pawn from one endgame so that they know to place it there in their own endgames; there is no expectation the exact endgame will repeat. Grandmasters have been estimated to know some 30,000 patterns from their studies, which is why they handle so many more positions accurately than amateurs. But on rare occasions, any chess player can get lucky, and an over-the-board déjà vu can occur. This happened to me five years ago.

First, the beginning of the story:

Klein – Tate, 1998 L.P.O.

1. e4 c5 2. c3 e6 3. d4 d5 4. exd5 exd5

5. Be3 cxd4 6. Bxd4 Nc6 7. Nf3 Bg4

8. Be2 Nh6 9. O-O Nf5 10. Ne5 Bxe2

11. Qxe2 Nfxd4 12. cxd4

Surely he can't take the pawn, can he?

12...Nxd4

Now since the discovered checks don't lead anywhere, the important

question is, "Where does White put his queen?"

13. Qe3?

The wrong choice. After Black's next move, the queen simply does nothing on the e-file. Black consolidates his extra position quickly and effortlessly.

13...Ne6 14. Qf3 Ng5 15. Qb3 Bd6 16. Qb5+ Kf8

17. Qxd5 Nh3+ 18. Kh1 Bxe5
19. Nxe5 Nxf2+ 20. Kg1 Ng4 21. Qf4 Nf6

22. Nc3 h5 23. Rad1 Qb6+ 24.
Kh1 Rh6 25. Nd5 Qxb2 26. Qd6+ Kg8

27. Rd2 Nxd5 28. Qxd5 Rf6 29. Rfd1
Qb4 30. Rd4 Qb6 31. h3 g6 32. Qg5 Re8

33. Rd7 Qf2 34. Rxb7 Re1+ 35.
Rxe1 Qxe1+ 36. Kh2 Rf1 0-1

I couldn't escape the nagging feeling after the game that Black's survival was miraculous. After careful study of the position after move 12, a better continuation was found. Too bad I will never get to use it...

Less than one year later, the pattern having been learned, lightning struck twice:

Klein – Lessler, 1999 Mustang Open
1. e4 c5 2. c3 Nf6 3. e5 Nd5 4. d4 cxd4

5. cxd4 e6 6. Nc3 d6 7. Nxd5 exd5

8.Nf3 Nc6 9. Be2 Bg4 10. O-O dxe5

11. Nxe5 Bxe2 12. Qxe2

Unbelievable! With completely different moves and move orders, the same position is reached after White's 12th, except this time White has a queen's bishop instead of a queen's knight. Regardless of which minor piece remains, the proper synapses fired and allowed me to remember the improvement.

12...Nxd4 13. Qg4!

The point is clear. Like 13. Qe3, the knight is attacked, but this time 13...Ne6 is met by the strong rejoinder 14. Qa4+. Still, it is Black's best since 13...Bc5 fails to 14. Qxg7, 13...Qb6 to 14. Qd7#, and any other knight move leaves the e-file mortally weak.

13... Ne6 14. Qa4+ Ke7 15. Qh4+ g5

White tried to induce 15...f6? 16. Ng6+.

If Black repeated with 15...Ke8, then White staircases his queen by 16. Qa4+ Ke7 17. Qb4+ Ke8 18. Qb5+ Ke7 19. Qxb7+.

16. Bxg5+ Nxg5 17. Qxg5+ f6 18. Qh4 Bh6

19. Rfe1 Bg5 20. Qb4+ 1-0

Unlike Korchnoi's title hopes, things went better for me the second time around.

CCC RESULTS

[Wendy's LXI](#), 12-8-04,

40 participants

Top: 1st SM Karthik Rangarajan 4.5-.5, 2nd NM Frankie Newton 4-1. "B" 1st Laura Lee 3.5-1.5, 2nd Dr. Gerard Szyber 2.5-1.5. "C" 1st Winfred Gatlin 2.5-2.5. Lower: =1st-2nd Duncan McLaughlin, Justin Robason 3-2.

[Smokehouse LVII](#), 11-20-04,

27 participants

Top: =1st-2nd Chris Mabe, Gennady Brazhnikov 2.5-.5. Middle: =1st-4th Dave Richards, Jerome DeBell, Ken Ivens, Randy Wheeless 2.5-.5. Lower: =1st-2nd Phil Whittington, Don Hofer 2.5-.5.

[Wendy's LX](#), 11-3-04,

59 participants

Top: 1st Chris Mabe 4-1, 2nd SM Karthik Rangarajan 3.5-1.5. "B": Mike Eberhardinger 3.5-.5, 2nd Chris Callahan 2.5-2.5. "C": =1st-2nd Spencer Singleton, Marty Katz 2.5-2.5. Lower: 1st Samuel Xin 4-1, =2nd-4th Phil Whittington, Ilgin Birsan, Ervon Nichols 3-2.

[Smokehouse LVI](#), 10-16-04,

22 participants

Top: 1st SM Karthik Rangarajan 3-0, =2nd-3rd Chris Mabe, Keith Eubanks 2-1. Lower: 1st Josh Lawson 3-0, 2nd Slobodan Sinanovic 2.5-.5.

[Wendy's LIX](#), 9-29-04,

49 participants

Top: 1st SM Karthik Rangarajan 4.5-.5, 2nd NM Frankie Newton 4-1. "B": 1st Jesse Eddleman 4.5-.5, 2nd Bobby Waddell 3-2. "C" =1st-2nd Marty Katz, Phil Whittington 4.5-.5. Lower: 1st Ervon Nichols 4-1, F. Dean Betts 3-1.

[Smokehouse LV](#), 9-18-04,

19 participants

Top: 1st NM Leland Fuerstman 3-0, =2nd-4th Shawn Pealer, Jackie Ryan, Ken Ivens 2-1. Lower: 1st Colette Wheelless 3-0, 2nd Chang Sun 2.5-.5.

[Green Market Championship](#), 9-11-04,

16 participants,

Top: =1st-2nd SM Karthik Rangarajan, NM Daniel Tapia 3-0

GAMES

Noble,M (2240) – Schroer,J (2473) [E09]

NC Open 2004 (2), 2004

1.c4 e6 2.g3 d5 3.Nf3 c6 4.Qc2 Nf6 5.Bg2 Be7 6.0-0 0-0 7.d4 Nbd7 8.Nbd2 b6 9.b3 Bb7 10.Bb2 Rc8 11.e4 c5 12.e5 Ne8 13.dc5 Nc5 14.Rfd1 Qc7 15.Rac1 Nd7 16.Qd3 Qb8 17.cd5 Bd5 18.Ne4 Rc1 19.Rc1 h6 20.Nc3 Bc6 21.Ne2 Nc5 22.Qc3 Bb7 23.Ne1 Nc7 24.Bb7 Qb7 25.Qf3 Nd5 26.Nf4 Bg5 27.Neg2 Nf4 28.Qb7 Nh3 29.Kf1 Nb7 30.Rc7 Rb8 31.f4 Bd8 32.Rd7 0-1

Alterman,D – Taylor,W [A80]

NC Open 2004, 2004

1.d4 f5 2.Nf3 Nf6 3.Bg5 d6 4.Nbd2 Be6 5.Bf6 gf6 6.Nh4 Qd7 7.e4 fe4 8.Ne4 Bf7 9.Bd3 Nc6 10.c3 Bg7 11.Qf3 0-0-0 12.Nf5 Rhg8 13.Ne3 Bg6 14.0-0 e5 15.d5 Ne7 16.Bc4 f5 17.Ng5 f4 18.Nd1 Rdf8 19.Ne6 Rf6 20.Qe2 Bf5 21.Bb5 c6 22.Ng7 Rg7 23.dc6 Nc6 24.g3 d5 25.Kh1 Be4 26.f3 fg3 27.Ne3 Bf5 28.Rad1 Be6 29.Rg1 Rh6 30.Rg2 Bh3 31.Rgg1 d4 32.cd4 ed4 33.Qc2 Qc7 34.Rge1 de3 35.Re3 g2 36.Kg1 Qh2 0-1

McCartney,P (1964) – Johnson,R (1998) [D01]

NC Open 2004 (4), 2004

1.d4 d5 2.Nc3 Nf6 3.Bg5 Nbd7 4.e3 h6 5.Bh4 c6 6.f4 g6 7.Bd3 Bg7 8.Nf3 Nb6 9.Qe2 Bf5 10.Bf5 gf5 11.Bf6 Bf6 12.Ne5 h5 13.g3 Be5 14.fe5 e6 15.0-0-0 Qe7 16.Rdf1 Nc4 17.Nd1 Qb4 18.c3 Qa5 19.Kb1 b5 20.Ka1 Qd8 21.Rf4 Qg5 22.Rhf1 Ke7 23.Nf2 Rh7 24.e4 de4 25.Ne4 fe4 26.Qe4 Qg6 27.Qc6 Rd8 28.Qc5 Nd6 29.Qc7 Rd7 30.ed6 Ke8 31.Qc8 Rd8 32.d7 Ke7 33.Qc5 Kd7 34.Qb5 Ke7 35.Qc5 1-0

Hudson,J – Ulaky,J [D03]

NC Open 2004 (2), 2004

1.d4 d5 2.Nf3 Nf6 3.Bg5 Nbd7 4.e3 c5 5.c3 Qb6 6.Qc2 h6 7.Bf4 Ne4 8.h4 e6 9.Bd3 c4 10.Be4 de4 11.Nfd2 Qc6 12.Qe4 Qb5 13.Qc2 Nf6 14.a4 Qc6 15.e4 a6 16.0-0 Be7 17.Re1 b6 18.Nf3 Ng4 19.Nbd2 Bh4 20.Nh4 g5 21.f3 gf4 22.fg4 Rg8 23.Nhf3 f6 24.e5 Rg4 25.Qh7 fe5 26.Qh8 Ke7 27.de5 Bb7 28.Qf6 Ke8 29.Ne4 Kd7 30.Rad1 Kc7 31.Qe7 Kb8 32.Rd6 Qa4 33.Qd8 1-0

Baxter,K (1926) – Holmes,G (1740) [E76]

NC Open 2004 (2), 2004

1.d4 Nf6 2.c4 g6 3.Nc3 Bg7 4.e4 d6 5.f4 0-0 6.Nf3 Na6 7.e5 de5 8.fe5 Ng4 9.Bf4 f6 10.ef6 ef6 11.Be2 Re8 12.Qc1 Qe7 13.0-0 Nb4 14.a3 Nc6 15.Re1 f5 16.Nd5 Qe4 17.h3 Bd4 18.Kh1 h5 19.hg4 hg4 20.Bf1 And the Queen is trapped. 1-0

Stephenson,A (1544) – Keller,L (1549) [B01]

NC Open 2004 (3), 2004

1.e4 d5 2.ed5 Qd5 3.Nc3 Qd6 4.Nf3 c6 5.d4 Nf6 6.Bc4 Bg4 7.Bf7 Kf7 8.Ne5 Qe5 9.de5 Bd1 10.ef6 Bc2 11.fe7 Be7 12.Bf4 Re8 13.Rc1 Bg6 0-1

Jones,J (1791) – Marsh,M (1642) [B23]

NC Open 2004 (5), 2004

1.e4 c5 2.Nc3 d6 3.f4 Nf6 4.Nf3 a6 5.a4 e6 6.Be2 Nc6 7.0-0 Be7 8.d3 0-0 9.h3 b6 10.Be3 g6 11.Qe1 Kg7 12.Nd1 Nb4 13.Qd2 Rh8 14.g4 Nd7 15.f5 Nf8 16.Bh6 Kg8 17.Ne3 Bf6 18.g5 Bb2 19.Rab1 Bg7 20.Ng4 ef5 21.Bg7 fg4 22.Bf6 Qd7 23.Nh2 Qa4 24.Bg4 h5 25.Bh8 hg4 26.Ba1 Nc2 27.Qf2 Be6 28.Bf6 Nh7 29.Qh4 Qe8 30.Ng4 Bg4 31.Qg4 Ne3 32.Qf4 Nf1 33.Ba1 Qe7 34.h4 b5

35.Rf1 b4 36.Bf6 Qf8 37.Ba1 a5 38.Qc1 Re8 39.Qb2 Re5 40.Qa2 Re7 41.Qb2 Re5 42.Qa2 ½-½

Greene,M – Spencer,S [A40]

NC Open 2004 (2), 2004

1.d4 b6 2.Nf3 Bb7 3.e3 e6 4.Bd3 d5 5.0-0 Ba6 6.b3 Bd6 7.Bb2 Bd3 8.Qd3 Nf6 9.Nbd2 0-0 10.e4 de4 11.Ne4 Ne4 12.Qe4 Nd7 13.c4 Nf6 14.Qc2 c5 15.dc5 Bc5 16.Ng5 Re8 17.Rad1 Qe7 18.Bf6 Qf6 19.Qh7 Kf8 20.Qh5 Kg8 21.Qh7 Kf8 22.Rd7 1-0

Stone,G (1066) – Taylor,J (1382) [A13]

NC Open 2004 (1), 2004

1.b3 Nf6 2.Bb2 e6 3.c4 c5 4.e3 Nc6 5.Nf3 d5 6.cd5 ed5 7.Bb5 Bg4 8.0-0 Bd6 9.d4 Qc7 10.Nbd2 Bh2 11.Kh1 Ne4 12.Rc1 Qd6 13.dc5 Qh6 14.Bc6 bc6 15.Qc2 Nd2 16.Qd2 Bf3 17.gf3 Bg3 0-1

Calloway,P (1741) – Eberhardinger,M (1677) [C44]

NC Open 2004 (5), 2004

1.e4 e5 2.Nf3 Nc6 3.d4 ed4 4.Bc4 h6 5.0-0 Bc5 6.c3 d3 7.Qd3 Qe7 8.Bf4 Bb6 9.e5 Nd8 10.a4 a6 11.a5 Ba7 12.Nbd2 Ne6 13.Bg3 Qf8 14.Rad1 Nc5 15.Qc2 Ne7 16.b4 Ne6 17.Be6 fe6 18.c4 Qf5 19.Qf5 Nf5 20.Ne4 b6 21.ab6 Bb6 22.c5 Ba7 23.Nh4 Ne7 24.f4 Bb7 25.Nc3 a5 26.Nb5 Kd8 27.Na7 Ra7 28.b5 Bd5 29.Rb1 Rb7 30.Rfd1 Kc8 31.Nf3 Rf8 32.Nd4 Nf5 33.Bf2 Be4 34.Ra1 Ne7 35.g3 Nd5 36.Ra5 Nc3 37.Rc1 Nd5 38.Ra8 Rb8 39.Rb8 Kb8 40.c6 Kc8 41.cd7 Kd7 42.Rd1 1-0

Saharkhiz,S – Savage ,M [A07]

NC Open 2004 (5), 2004

1.Nf3 d5 2.g3 c6 3.Bg2 Bg4 4.d3 h5 5.Nbd2 h4 6.Nh4 e5 7.h3 Be6 8.Nhf3 Bd6 9.b3 f6 10.Bb2

Qd7 11.g4 Ne7 12.e4 Ng6 13.d4 Nf4 14.Bf1 Bg4 15.de5 fe5 16.Be5 Bf3 17.Nf3 Be5 18.Ne5 Qe6
19.Qd4 0-0 20.ed5 Nd5 21.0-0-0 Rf4 22.Qb2 Rf2 23.Ng4 Rf7 24.Bd3 Na6 25.Rhe1 Qd6 26.Kb1
Qb4 27.Rc1 b5 28.c3 Qd6 29.Rcd1 Rb8 30.Re2 ½-½

Lalor,J (1602) – Pires,J (1773) [C10]

NC Open 2004 (4), 2004

1.e4 e6 2.d4 d5 3.Nc3 de4 4.Ne4 Bd7 5.Nf3 Bc6 6.Bd3 Nd7 7.0-0 Ngf6 8.Nf6 Nf6 9.c3 Be4
10.Be4 Ne4 11.Ne5 c6 12.Qf3 Nd6 13.Re1 Be7 14.Bf4 0-0 15.Ng4 Nf5 16.Ne3 Ne3 17.Re3 Bf6
18.Qg4 Qb6 19.b3 Rfd8 20.Rg3 Qa5 21.Bh6 g6 22.h4 Rd5 23.b4 Qd8 24.h5 a5 25.hg6 hg6
26.Rb1 ab4 27.Rb4 b5 28.Rb2 Ra4 29.Re2 Qe7 30.Qf4 e5 31.Qg4 Rc4 32.f4 Qa7 33.fe5 Be5
34.Qc8 Kh7 35.Rh3 Qb8 1-0

McIntosh,S (1917) – Pealer,S (2033) [B00]

NC Open 2004 (5), 2004

1.e4 Nc6 2.Nf3 g6 3.d4 Bg7 4.c3 d6 5.Bg5 h6 6.Bh4 Nf6 7.Nbd2 0-0 8.Bb5 Bd7 9.Qe2 a6 10.Bd3
e5 11.de5 de5 12.Bc2 Qe8 13.0-0 Bg4 14.Bf6 Bf6 15.h3 Be6 16.Bb3 Rd8 17.Rfd1 Bg7 18.Nc4
Qe7 19.Ne3 Na5 20.Be6 Qe6 21.b4 Nc6 22.Nd5 Rd7 23.Rd2 Rfd8 24.Rad1 Qe8 25.a4 Ne7
26.Nc7 Rd2 27.Rd2 Rd2 28.Qd2 Qa4 29.Qd8 Bf8 30.Ne5 Qa1 31.Kh2 Qc3 32.Nd7 1-0

Chess Computer (1771) - Fred Wilson (1815) [C12] 2001

18MB, Fritz7.ctg

1.e4 e6 [1...d5 2.exd5 Qxd5 3.Nc3 Qa5 4.d4 Nf6 5.Bc4 Bf5 6.Nf3 h6?! 7.0-0 c6
8.Bd2 e6 9.Re1 Be7? (9...Qc7!? with a slight advantage for White) 10.Nd5!
Qd8 11.Nxe7 Qxe7 12.a3! a5 (12...0-0?? 13.Bb4+-) 13.Bb3 (13.Ne5!?!± was
possibly stronger) 13...Ne4 14.Be3 Nd7 15.c4 Ng5?! 16.d5! Nxf3+ 17.Qxf3 Ne5
18.Qg3 Nd3 19.Re2 e5? (19...Qf6 was better and would avoid what follows.)
20.Bc2+- f6 21.Bd2 Nf4 22.Bxf4 Bxc2 23.Rxc2 (23.Bxe5!) 23...exf4 24.Qxf4 c5
25.Rc3 0-0 26.Re3 Qd7 27.h3 g5 28.Qf3 f5 29.Qh5 Kg7 30.Rae1 Rf7 31.Re6 Rh8
32.Rg6+ Kf8! 33.Rxh6 Rxh6 34.Qxh6+ Kg8 35.Qg6+ Kf8 36.Qxg5 Rg7 37.Qf6+ Kg8
38.Qe6+ Qf7 39.Qxf7+ Rxf7 40.Re6 Rg7 1-0 Fred Wilson (1812)- O. Wilson
(1661) Land of the Sky 1999]

1.e4 e6 2.d4 d5 3.Nc3 Nf6 4.Bg5 Bb4 5.e5 h6 6.Bd2 Bxc3 7.bxc3 Ne4 8.Qg4 Kf8 9.Bd3
Nxd2 10.Kxd2 c5 11.h4 c4 12.Be2 Nc6 13.Rh3 b5 [13...Rg8!? 14.Qf4 Bd7 15.Bh5
Be8= 16.Ne2 f5 17.g4 Ne7 18.Rg1 Bxh5 19.gxh5 Qe8 20.Qf3 Rc8 21.Nf4 Rc6
22.Rhg3 Ra6 23.Qg2 Qf7 24.Qf1 Qe8 25.R1g2 Kf7 26.Rg1 Rxa2 27.Qg2 Qf8 28.Rb1
Qc8 29.Rg1 1/2-1/2 V. Anand- V. Korchnoi Dos Hermanas 1999] 14.Rb1 Rb8
15.Rg3 Rg8 Despite first impressions, Black is already slightly better as
White's "attack" on the kingside has hit a brick wall. 16.f4? [16.Qf4 Qe7
17.Bh5 with a slight advantage to Black] 16...a5 [16...Qa5!? may be even
better] 17.Rf3 b4 18.Qh3?? [18.Kc1 was better, although Black would have a
clear advantage] 18...bxc3+ 19.Kc1? and White resigned because it is
checkmate in 4 moves: 19...Rxb1+ 20.Kxb1 Qb6+ 21.Kc1 Qb2+ 22.Kd1 Qb1# 0-1

Land of the Sky XVIII

\$\$20,000 b/320, \$10,000 Gtd.

January 28-30, 2005

Weekend before the Super Bowl

Grand Prix - 80

Asheville, North Carolina

Holiday Inn Sunspree Resort, One Holiday Inn Dr., Asheville, NC 28806, 828-254-3211.

HR: \$69 and up to four occupants, mention tournament.

5SS, 35/90, then G/60

Open: (All) 1st \$2500, 2nd \$1000, 3rd \$800, 4th \$500, 5th \$400, 2299-2200, 2199-2100,
2099-under each category \$700-400.

Amateur: (U2000) 1st \$1600, 2nd \$800, 3rd \$400, 1899-1800, 1799-1700, 1699-under
each category \$700-400.

Booster: (U1600) 1st \$1500, 2nd \$800, 3rd \$400, 1499-1400, 1399-1300, 1299-under ea. category \$500-300, Unr. \$300. Unr. eligible for unr. prize only.

EF: \$84 postmarked by 1/21, \$10 more at site or \$44 postmarked by 1/21 and \$40 at site. \$10 off pre-entry or at site for players new to Land of the Sky. Family discount: first member full EF, \$20 off each additional (immediate family only, d/n apply to trophy entries). Players under 18: Trophy only-\$20, pre or at site, no discounts, if playing for money \$10 off pre or at site EF. One discount per player. Visa & Mastercard Accepted (add \$3 to EF).

Optional Re-entry: Re-enter for \$47 after Friday rd, counts as 1/2 entry toward based-on prize fund.

Reg: Fri. 3pm-7pm for Friday round, anytime until Saturday 1pm (one 1/2 pt bye avail rds 1-3). Rds: 1st rd-Your Choice-Fri. 8pm or Sat. 9am (will assume Sat. Rd. if no choice made), other rds 2:15-7:15 on Sat., 9-2:15 on Sun.

Blitz Tournament: Saturday morning. GM Alex Goldin will be giving a simul Sunday night at 8:30 pm. \$20/board.

U1200 Section (rated): 5SS, G/60. 70% of EF paid in prizes. EF: \$40 pre (no discounts), \$10 more at site. \$\$ 20% to 1st, 15% to 2nd, 10% to 3rd, U900 10% to 1st, 5% to 2nd, Unr. 10% to 1st. Unrated eligible for unrated prize only. Reg: anytime up to one hour before any round (one 1/2 point bye available rds 1-3). Rds: Sat. 10:30-1:30-4, Sun. 9-1:30.

Ent: Checks payable to WW, PO Box 1123, Weaverville, NC 28787, 828-645-4215, fax: 828-645-4216, wilderwad@aol.com.

Advance entries can be viewed online at www.ncchess.org

North Carolina Scholastic Chess Championship XXXII

March 5 & 6, 2005

Sheraton Charlotte Airport

Opening ceremonies will begin at 8:30am, March 5

5 Sections: K-12 (High School - 12th grade & under) 5 rounds

Accelerated Pairings may be possible in Open High School section

K-12 Under 1300 (High School 12th grade & under with a ranking lower than 1300) 5 rounds

K-8 (Middle School - 8th grade & under) 5 rounds

K-5 (Elementary - 5th grade & under) 7 rounds

K-3 (Primary - 3rd grade & under) 7 rounds

Time Controls: K-12, K-12 U1300, K-8: All the moves in 90 minutes (G/90)

K-5, K-3: All the moves in 60 minutes (G/60)

Round Times: K-12, K-12 U1300, K-8: Sat 9:00-1:00-5:00 Sun 9:00-1:00.

K-5, K-3: Sat 9:00-12:00-2:30-5:00 Sun 9:00-11:30-2:00

Awards (4:30 Sunday): K-12: Trophies to top 10 individuals, top 3 teams.

The winner of K-12 section gets a \$1500 Scholarship and expenses paid to play in Denker Tournament. This scholarship is sponsored by the NCCA and the Carolina Chess Foundation.

K-12 U1300: Trophies to top 10 individuals, top 3 teams.

K-8: Trophies to top 20 individuals, top 5 teams.

K-5: Trophies to top 20 individuals, top 5 teams.

K-3: Trophies to top 20 individuals, top 5 teams.

All other participants will receive ribbons for participation.

Seminars: Saturday after start of Round 1: Coaches Meeting

Entry Fee: \$20 if postmarked by February 1, 2005.

\$30 if postmarked by February, 21, 2005.

\$40 on site Friday evening March 4, 2005 until 9:30pm

\$50 on site Saturday March 5, 2005 until 9:30am, 1st round bye assigned

Sheraton Charlotte Airport Hotel

3315 S. I-85 Service Rd. and Billy Graham Parkway

Charlotte, NC 28208

Complete and mail this form with a check made out to CMSCA to:

CMSCA

5404 Crosshill Ct. Charlotte NC 28277

Homeschoolers participating for public schools must abide by USCF statutes.

FIDE-Rated Chess Tournament

June 4, 2005

Orchard Lake International

**Orchard Lake Campground, Saluda, North Carolina,
USA**

[Orchard Lake International](#)

3 Sections: Championship, U2200, U1300

\$\$2000 (Based on 56) **6 Grand Prix Points**

Entry Fee: \$49 (\$5 discount for scholastic or FIDE-rated players) +\$6 at site. EF

includes \$5 campground use fee.

Entries and More Information: Kevin Hyde, 705 Old Mountain Page Rd, Saluda, NC 28773, 828-749-1625 hyde@ioa.com

Facilities at Orchard Lake Campground include swimming, boating, fishing, 9-iron par 3 golf, horse shoes, hiking, volleyball, basketball, soccer, and more. Take your family camping for the weekend! Reserve a campsite or cabin: 828-749-3901
<http://www.orchardlakecampground.com/>

Directions to Orchard Lake Campground: From downtown Saluda, head west past fire station on Greenville St which becomes Mtn Page Rd. After 3.5 miles, turn left onto Mine Mountain Rd. Go 1.5 miles to campground entrance.

Orchard Lake RBO (U1000): June 4, 2005. 4 Round Swiss G/30, EF: \$10, includes \$5 campground fee. Plaques to top 3. Rounds: 9:00 - 11:00 - 1:30 - 3:30. Concurrent with Orchard Lake International.

Upcoming Tournaments

DATE	TOURNAMENT	LOCATION
January 15, 2005	Smokehouse	Charlotte
January 22, 2005	Raleigh Open	Raleigh
January 28-30, 2005	Land of the Sky	Asheville
February 5, 2005	Wildcat Scholastic	Chapel Hill
February 11-13	31st Snowstorm Special	Charleston, S.C.
February 12, 2005	Winter Open III Scholastic	Winston-Salem

February 12, 2005	Immaculata Swiss	Hendersonville
February 12, 2005	N.C. High School Class	Newton
February 19, 2005	Raleigh Open	Raleigh
February 19, 2005	Smokehouse	Charlotte
February 19, 2005	CMSCA Jr. Open	Charlotte
February 25-27,	Millennium Chess Festival	Virginia Beach
March 5-6	NC Scholastic Championship	Charlotte
March 12, 2005	Scholastic Team Chess	Charlotte
March 19, 2005	Smokehouse	Charlotte
March 26, 2005	Raleigh Open	Raleigh
April 16, 2005	Smokehouse	Charlotte
April 23, 2005	Scholastic Team Chess	Charlotte
April 23,	Raleigh Open	Raleigh
May 6-8	North Carolina Class Championships	Greensboro
May 14, 2005	Smokehouse	Charlotte
May 28, 2005	Raleigh Open	Raleigh
June 4, 2005	Orchard Lake International	Saluda
June 10-12, 2005	\$10,000 Charlotte Open	Charlotte
June 25, 2005	Raleigh Open	Raleigh
June 18, 2005	Smokehouse	Charlotte
July 16, 2005	Smokehouse	Charlotte
July 23, 2005	Raleigh Open	Raleigh
July 29-31, 2005	LPO	Greensboro

August 20, 2005	Smokehouse	Charlotte
August 27, 2005	Raleigh Open	Raleigh
September 17, 2005	Smokehouse	Charlotte
September 16-18,	NC Open	Greensboro
September 24, 2005	Raleigh Open	Raleigh
October 15, 2005	Smokehouse	Charlotte
October 22, 2005	Raleigh Open	Raleigh
November 19, 2005	Smokehouse	Charlotte
November 19, 2005	Raleigh Open	Raleigh
December 17, 2005	Smokehouse	Charlotte
December 17, 2005	Raleigh Open	Raleigh

NC CHESS CLUBS

Asheboro Chess Club

Contact: Tom Hales <whales@triad.rr.com>

Asheville Chess Club

Contact: Edwin Chamberlain <erchess@att.net>

Austin Chess Club

Contact: Norm Pruitt <normpruitt@infoave.net>

Website: <http://www.austinchessclub.org/>

Borders Chess Club

Contact: Leo Cabana <BordersChess@hotmail.com>

Website: <http://www.borderschess.org/>

Duke University Chess Club

Contact: Logan Allin <lwa@duke.edu>

Website: <http://www.duke.edu/web/dukechess>

East Carolina Scholastic Chess Club

Contact: Nathaniel Talbert <natetgo@netzero.net>

Greenville Chess Club

Greenville, NC 27858

Contact: Richard Miller <millerr@mail.ecu.edu>

Hendersonville Chess Club

Contact: Neal Harris <rajkipling@yahoo.com>

Hibriten HS Chess Club

Lenoir, NC 28645

Contact: John Thomas <jthomas@caa.k12.nc.us>

Jacksonville USO Chess Club

danielgarrett@earthlink.net>

Royal Rooks Chess Club (Charlotte)

Contact: Doug Millsaps <Kptnsky@bellsouth.net>

Upper Neuse Chess Union

Contact: Jeff Jones <kwyjibo924@aol.com>

Website: <http://upperneusechess.freewebsites.org/>

Wildcat Chess Club

Contact: Bob Waters <banjowaters@earthlink.net>

WNC Chess Club

Contact: Judd Pires <piresp@bellsouth.net>

Website: <http://www.wncchess.org/>

WS/FC Scholastic Chess Association

Contact: Keith Kolischak <keith@kbrcomm.com>

Website: <http://wschess.org/>

Yadkin Chess Club

Contact: Robin Kelly <YadkinChess@yahoo.com>

Website: <http://yadkinchess.tripod.com/>